

# JORDAN CONSUMER SENTIMENT INDEX

Q3' 2024

Data collected in September 2024

# Contents

**1** Introduction

---

**2** Jordan Consumer Sentiment Index

---

**3** Country's General Situation

---

**4** Personal Financial Situation

---

**5** Jordan's Economic Situation

---

**6** Employment

---

**7** Investment Climate

---

**8** JCSI Deep Dive

---

# INTRODUCTION





# Introducing the Jordan Consumer Sentiment Index

Ipsos Jordan Consumer Sentiment Index (JCSI), is a quarterly national survey of consumer attitudes on the current and future state of the local economy, personal financial situation, as well as confidence to make large investments and ability to save.

Consumer sentiment is a key predictor of purchase trends in the market. Despite it being a lagging indicator, if consumer confidence is high, people will make more purchases and the economy will expand.

Businesses and Policy Makers can monitor changes in the index to factor the data in their decision-making processes. A wave-on-wave decreasing trend suggests consumers have a negative outlook on their ability to spend. Thus, manufacturers may expect consumers to avoid retail purchases, particularly items that require financing. Likewise, banks can anticipate a decrease in lending activity, mortgage applications, and credit card usage.

# Introducing the Jordan Consumer Sentiment Index

The JCSI result is driven by the aggregation of four, weighted, sub-Indices

1

JCSI Current  
Personal  
Financial  
Conditions

2

JCSI Economic  
Expectations

3

JCSI Investment  
Climate

4

JCSI  
Employment  
Confidence

# Overall JCSI survey questions

**1**

Rate the current state of the economy in your local area using a scale from 1 to 7, where 7 means a very strong economy today and 1 means a very weak economy.

**2**

Looking ahead six months from now, do you expect the economy in your local area to be much stronger, somewhat stronger, about the same, somewhat weaker, or much weaker than it is now?

**3**

Rate your current financial situation, using a scale from 1 to 7, where 7 means your personal financial situation is very strong today and 1 means it is very weak.

**4**

Looking ahead six months from now, do you expect your personal financial situation to be much stronger, somewhat stronger, about the same, somewhat weaker, or much weaker than it is now?

**5**

Compared to 6 months ago, are you now more or less comfortable making a major purchase, like a home or car?

**6**

Compared to 6 months ago, are you now more or less comfortable making other household purchases?

**7**

Compared to 6 months ago, are you now more or less confident about job security for yourself, your family and other people you know personally?

**8**

Compared to 6 months ago, are you now more or less confident of your ability to invest in the future, including your ability to save money for your retirement or your children's education?

**9**

Thinking of the last 6 months, have you, someone in your family or someone else you know personally lost their job as a result of economic conditions?

**10**

Now look ahead at the next six months. How likely is it that you, someone in your family or someone else you know personally will lose their job in the next six months as a result of economic conditions?

# JORDAN CONSUMER SENTIMENT INDEX



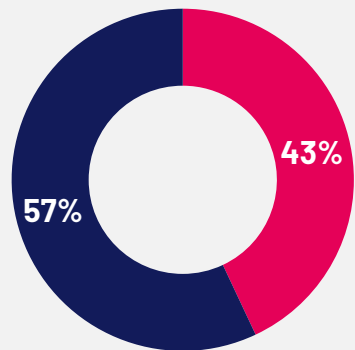
# JCSI summary

JCSI Q3 2024

**37.6** ▼

## Right direction / wrong track

Q: Generally speaking, would you say things in this country are heading in the right direction, or are they off on the wrong track?



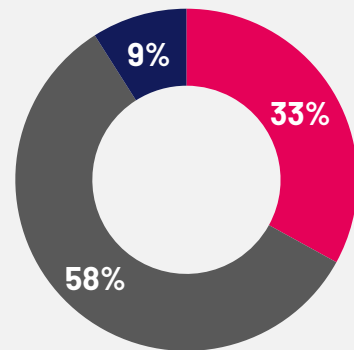
■ Right direction  
■ Wrong track

Previous wave Q2 2024

**40.3**

## Country economic situation

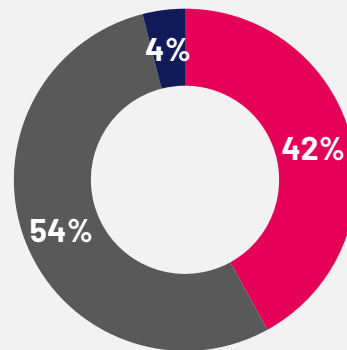
Q: Rate the current state of the economy in your local area using a scale from 1 to 7, where 7 means a very strong economy today and 1 means a very weak economy.



■ Strong ■ Weak  
■ Neither strong nor weak

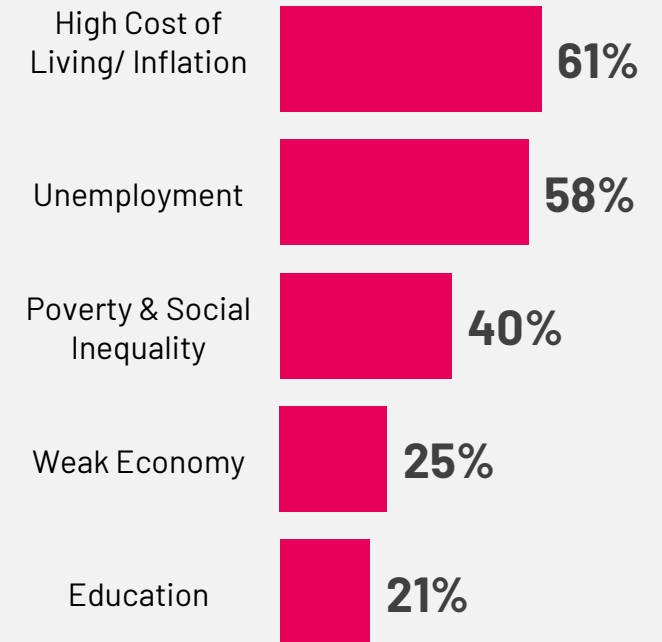
## Personal financial situation

Q: Rate your current financial situation, using a scale from 1 to 7, where 7 means your personal financial situation is very strong today and 1 means it is very weak.



■ Strong ■ Weak  
■ Neither strong nor weak

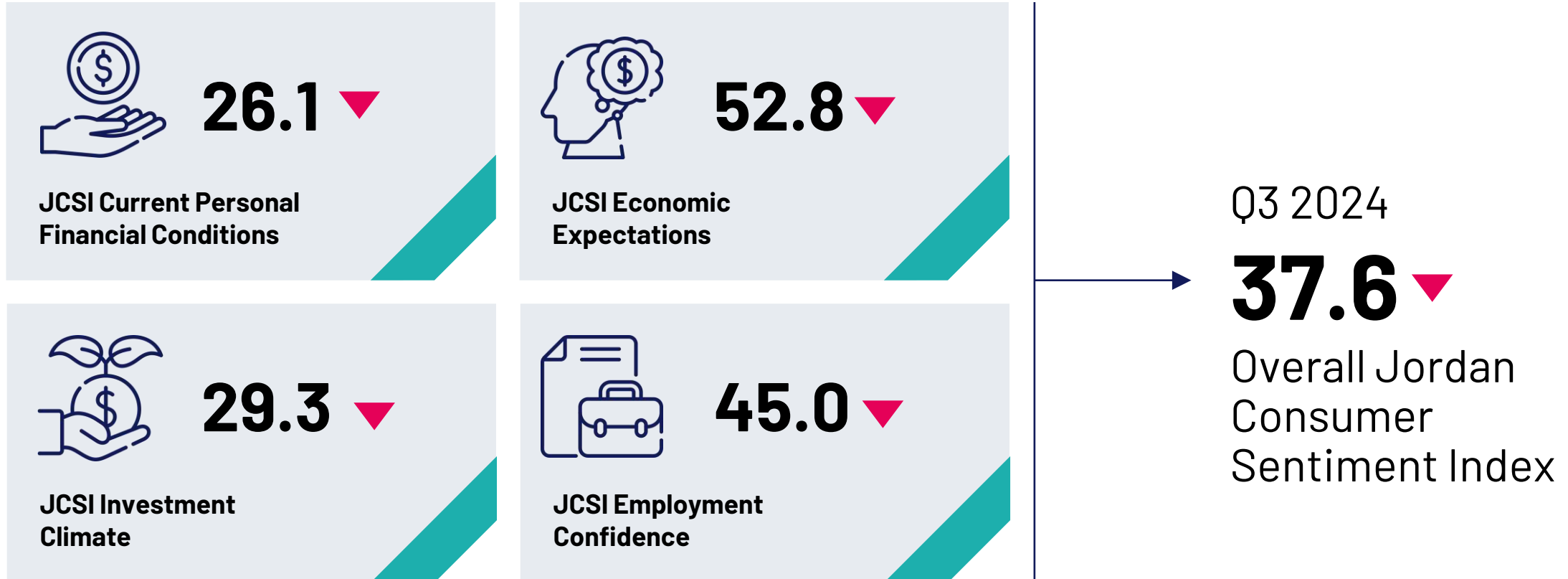
## Top 5 concerns for consumers in Jordan





# JCSI summary

The JCSI result is driven by the aggregation of four, weighted, sub-Indices



▼ Decreased vs previous wave

= Less than 1 point difference vs. previous wave

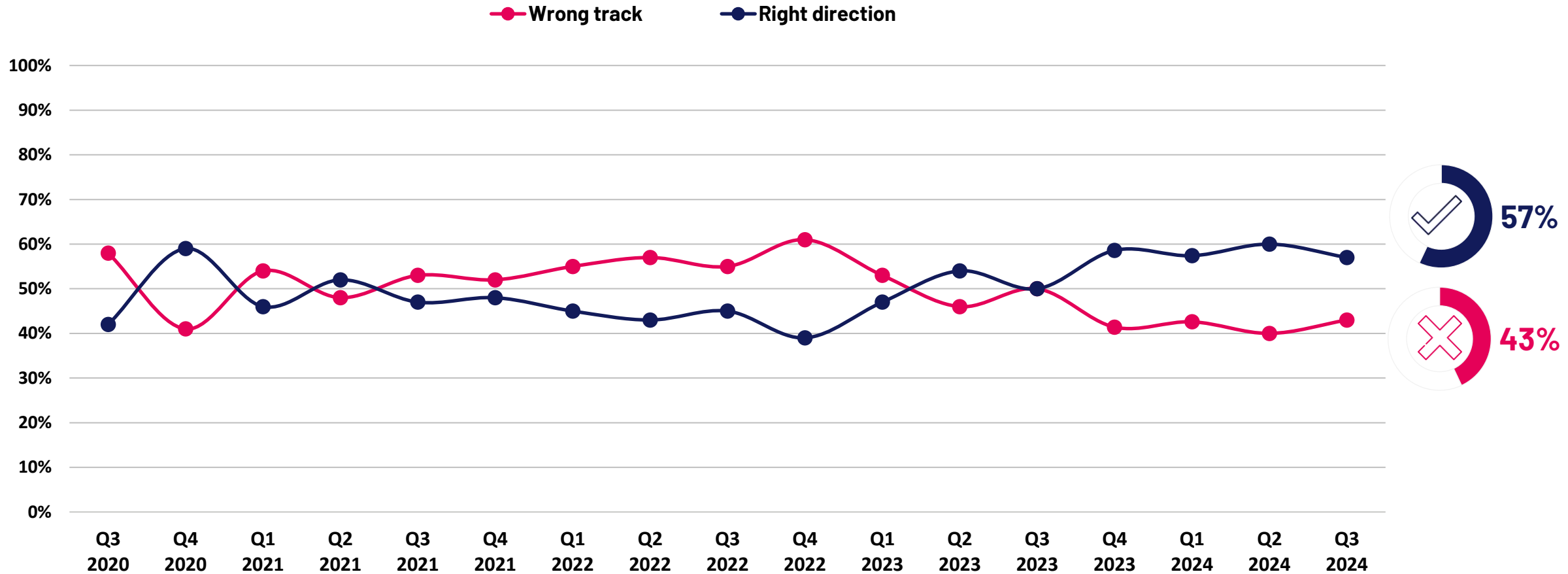
▲ Increased vs previous wave

# COUNTRY'S GENERAL SITUATION



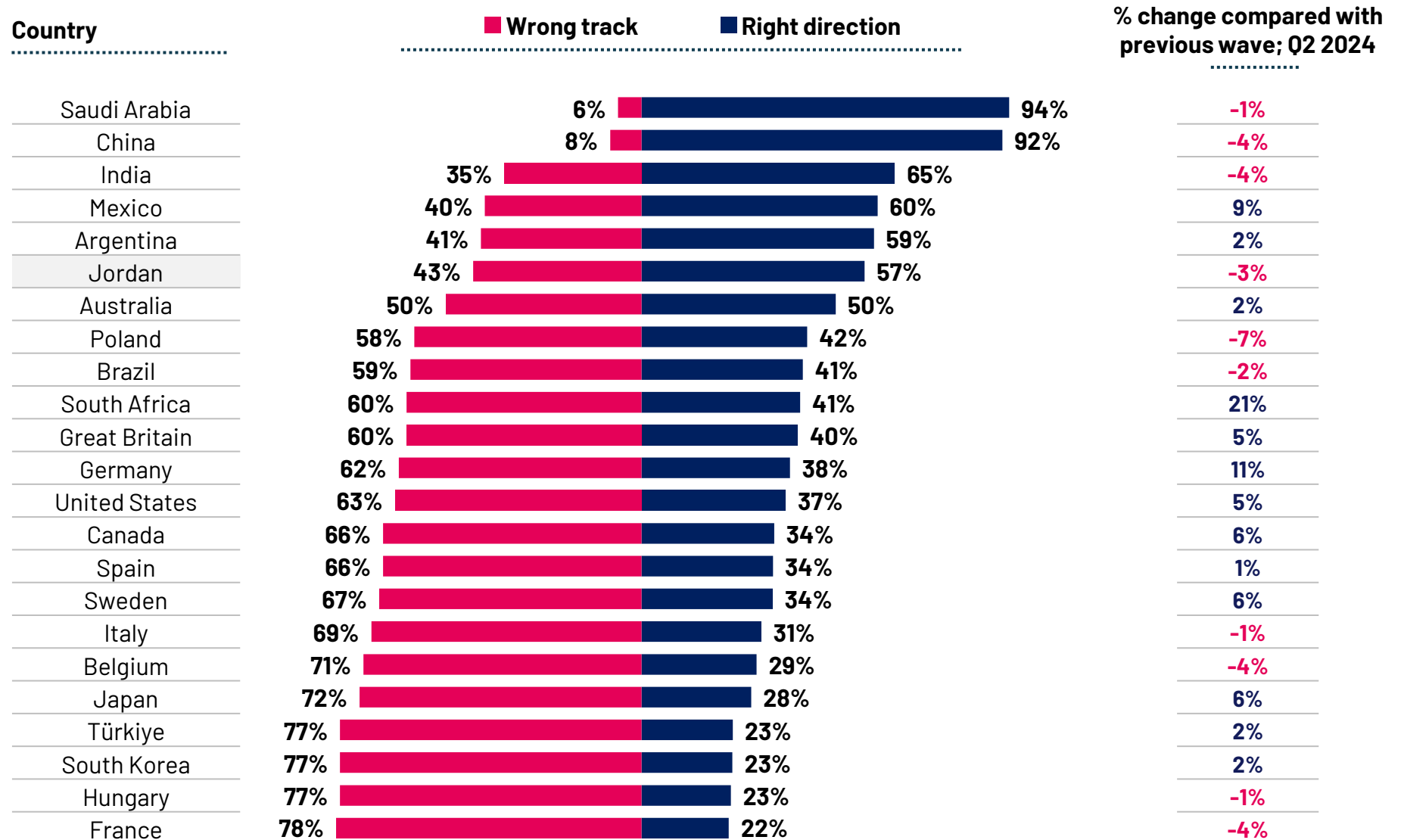
# Jordan: right direction / wrong track

Q. Generally speaking, would you say things in this country are heading in the right direction, or are they off on the wrong track?



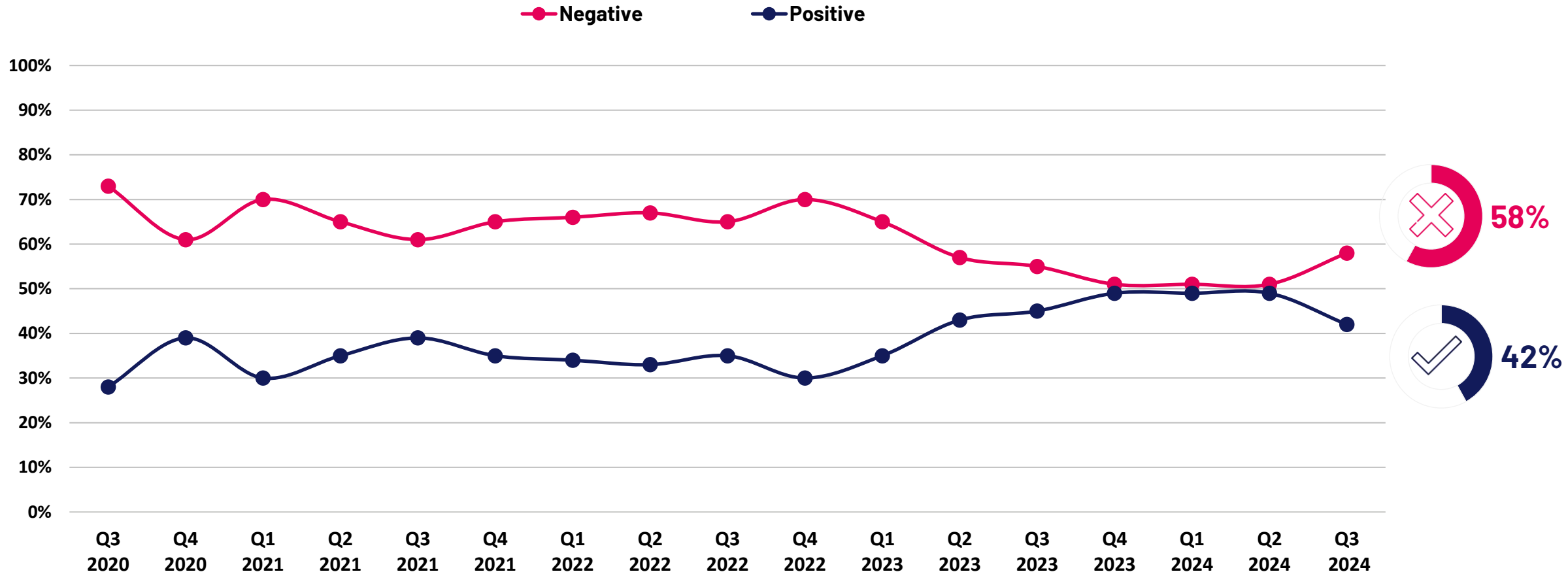
# Right direction /wrong track – global comparison

Q: Generally speaking, would you say things in this country are heading in the right direction, or are they off on the wrong track?



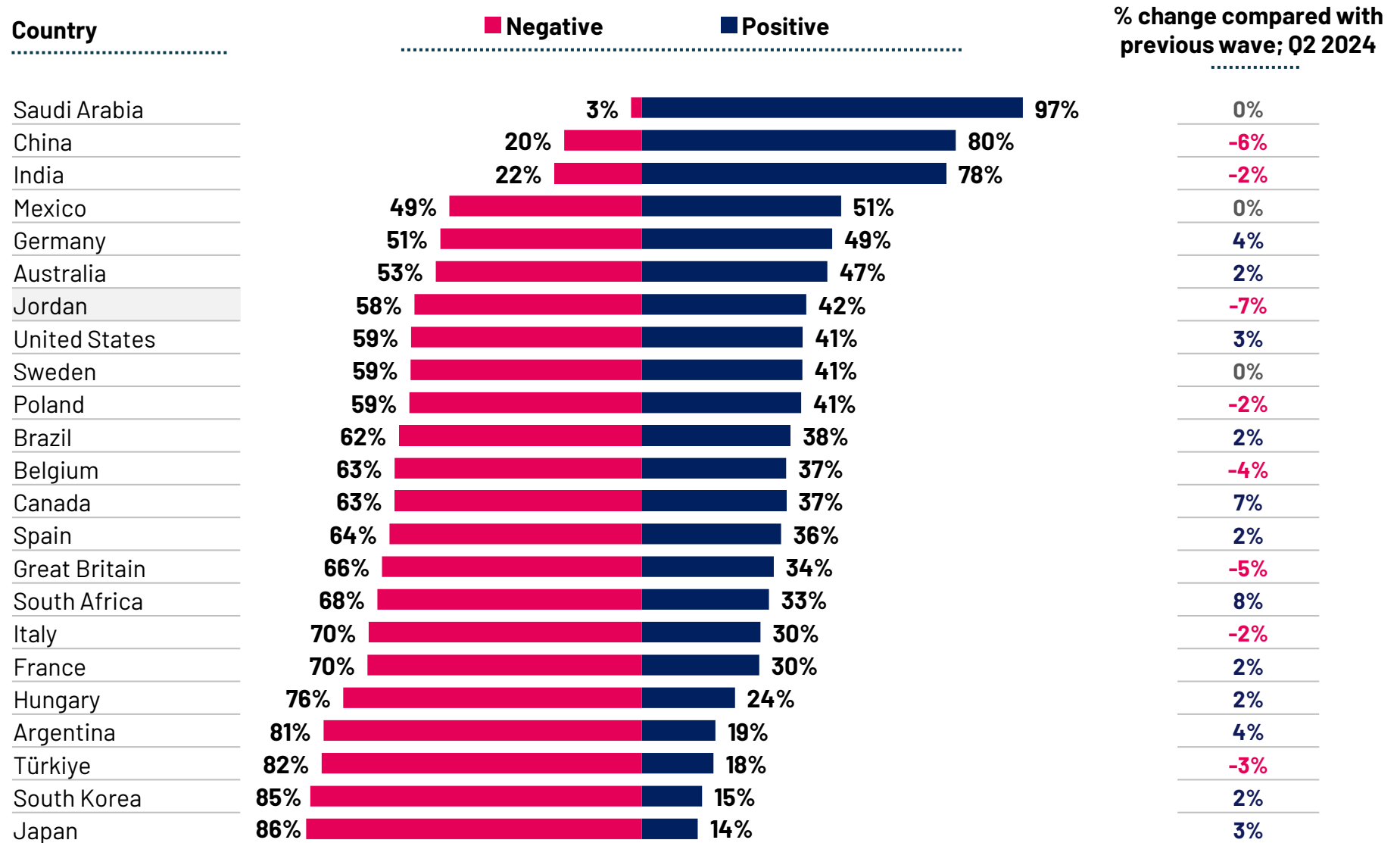
# Current economic situation

Q. Now, thinking about your economic situation, how would you describe the current economic situation in your country?



# Current economic situation – global comparison

Q. Now, thinking about your economic situation, how would you describe the current economic situation in your country?

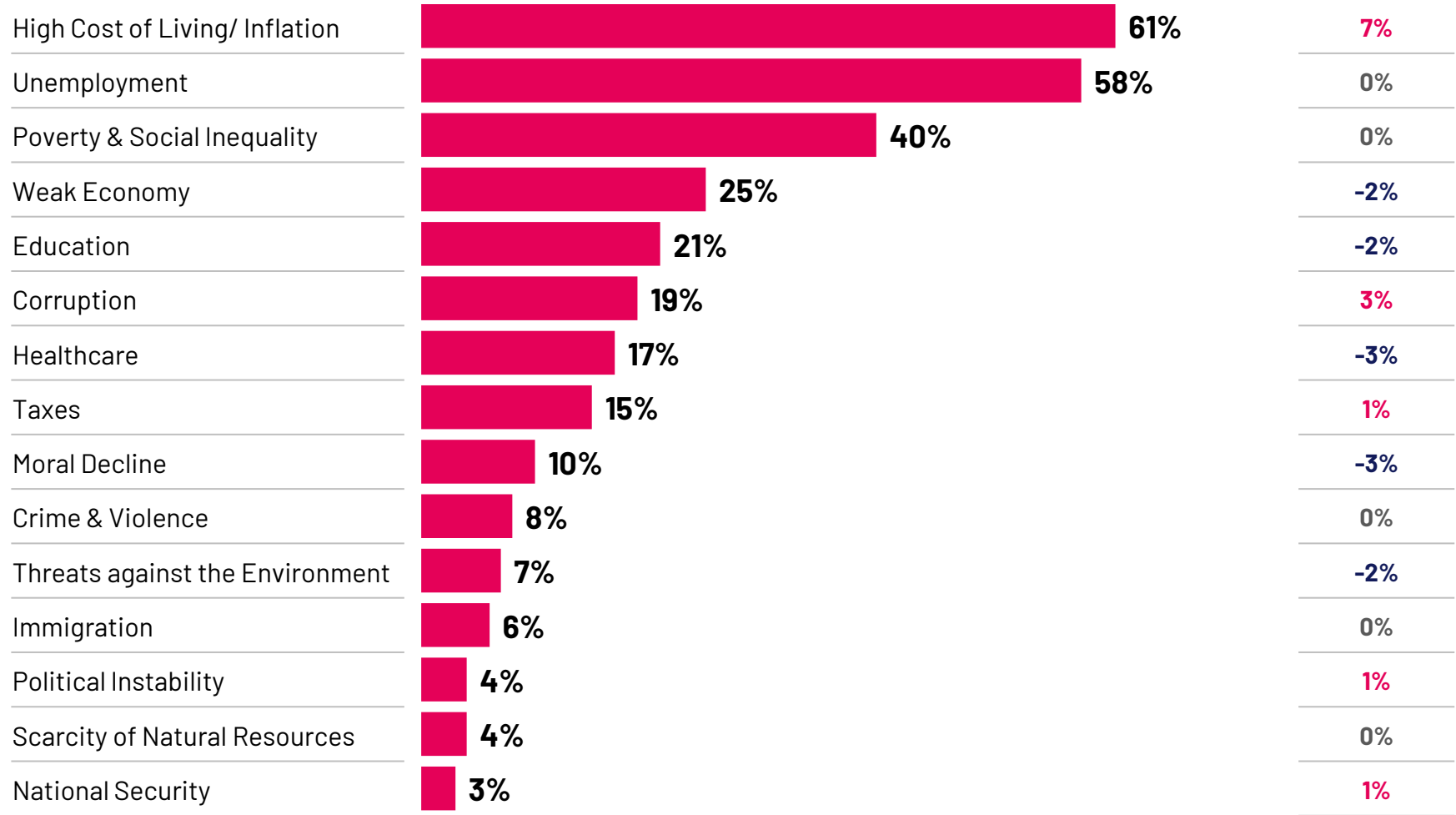


# What concerns Jordan

Q: Which of the following do you find the most worrying in Jordan?

## Concerns for consumers in Jordan

% change compared with previous wave; Q2 2024



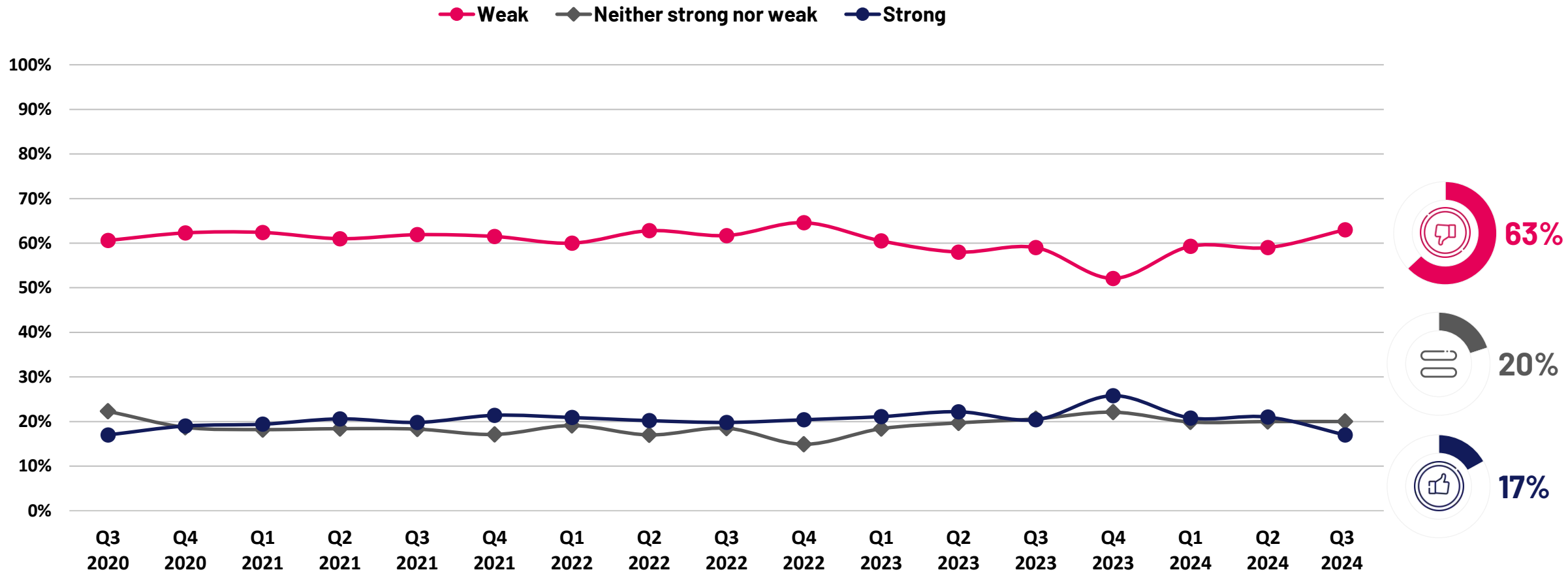
# PERSONAL FINANCIAL SITUATION





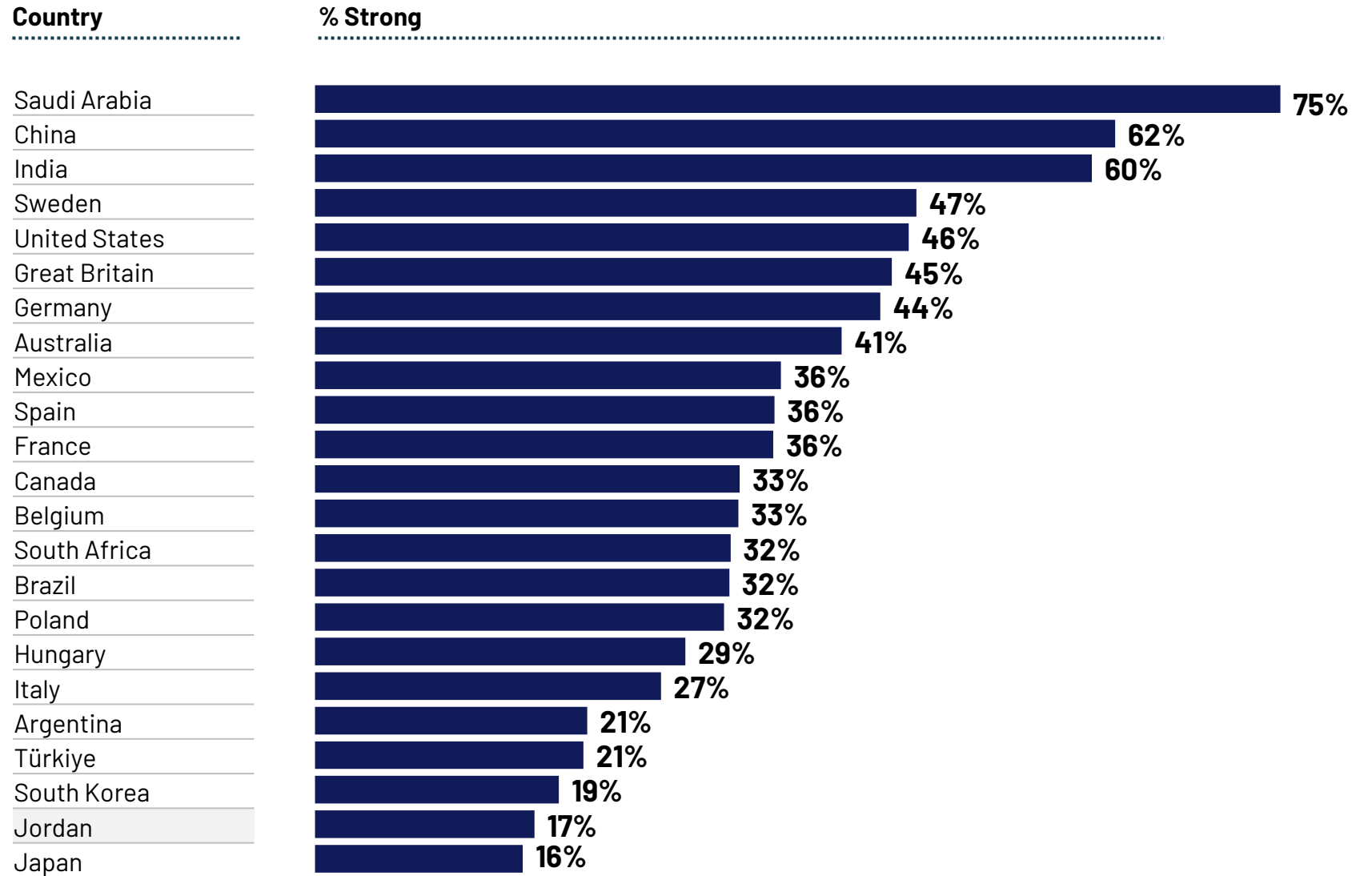
# Current personal financial situation

Q. Rate your current financial situation, using a scale from 1 to 7, where 7 means your personal financial situation is very strong today and 1 means it is very weak.



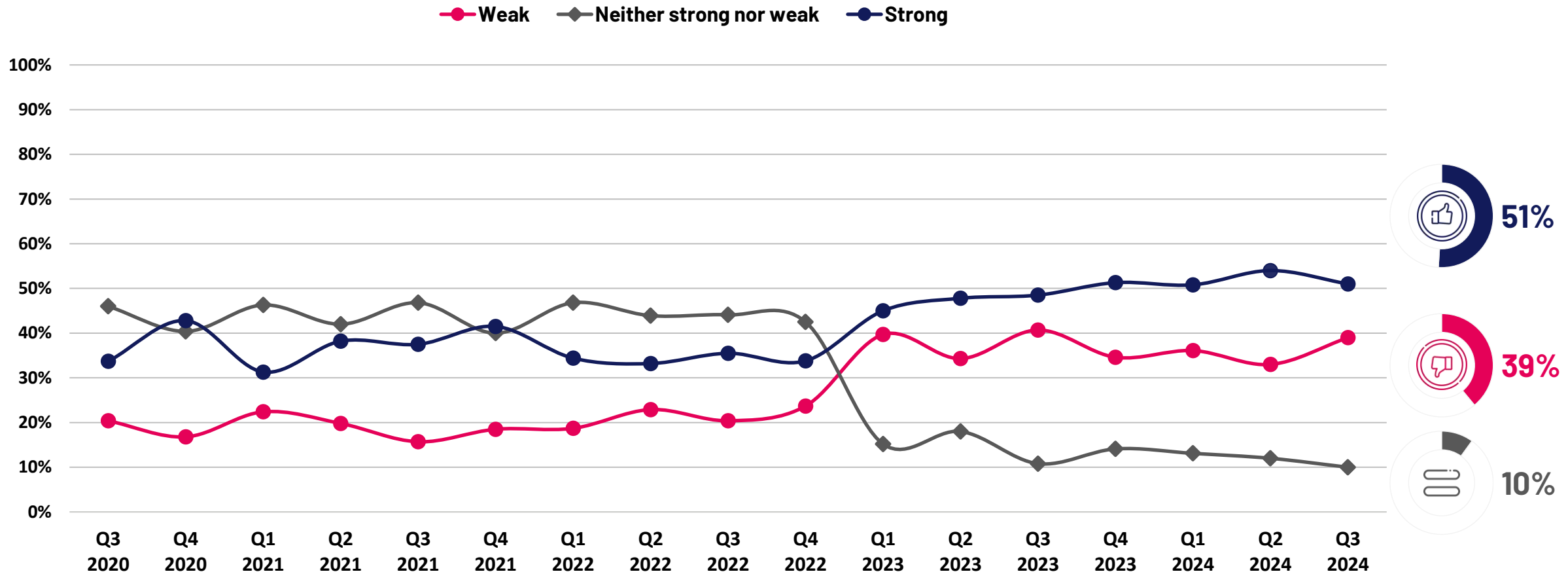
# Current personal financial situation – global comparison

Q: Rate your current financial situation, using a scale from 1 to 7, where 7 means your personal financial situation is very strong today and 1 means it is very weak.



# Future personal financial situation

Q. Looking ahead six months from now, do you expect your personal financial situation to be much stronger, somewhat stronger, about the same, somewhat weaker, or much weaker than it is now?

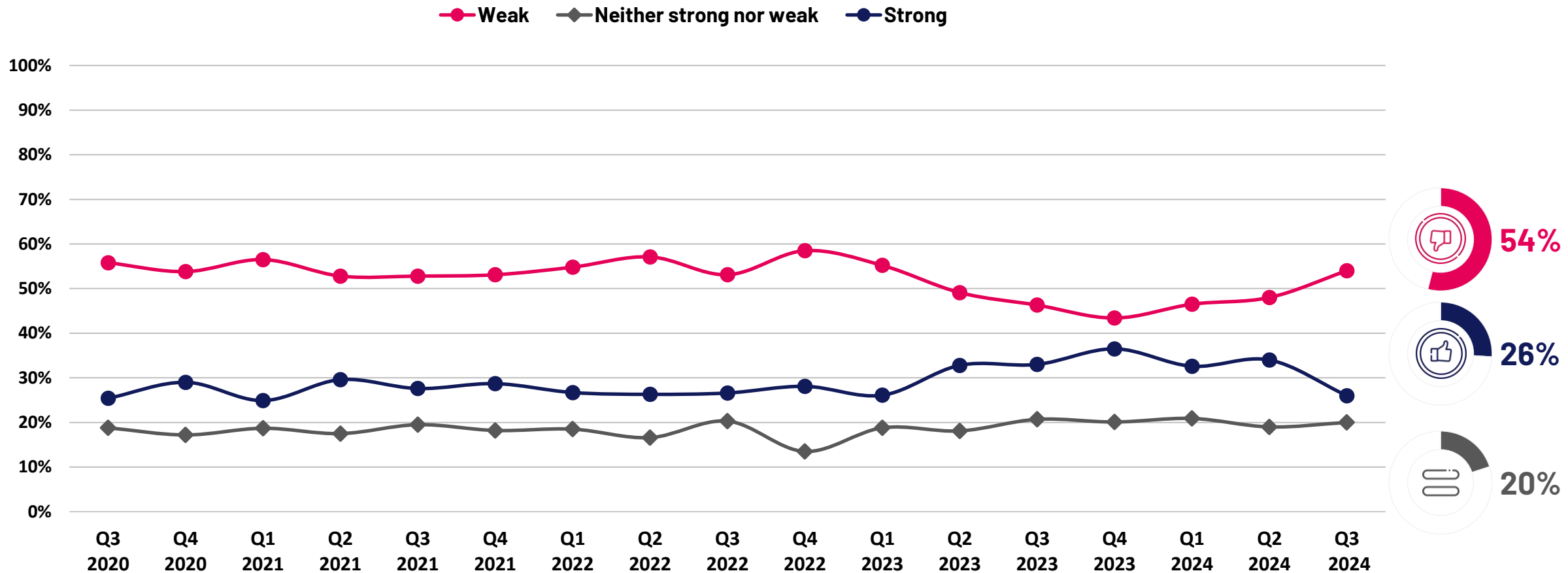


# JORDAN'S ECONOMIC SITUATION



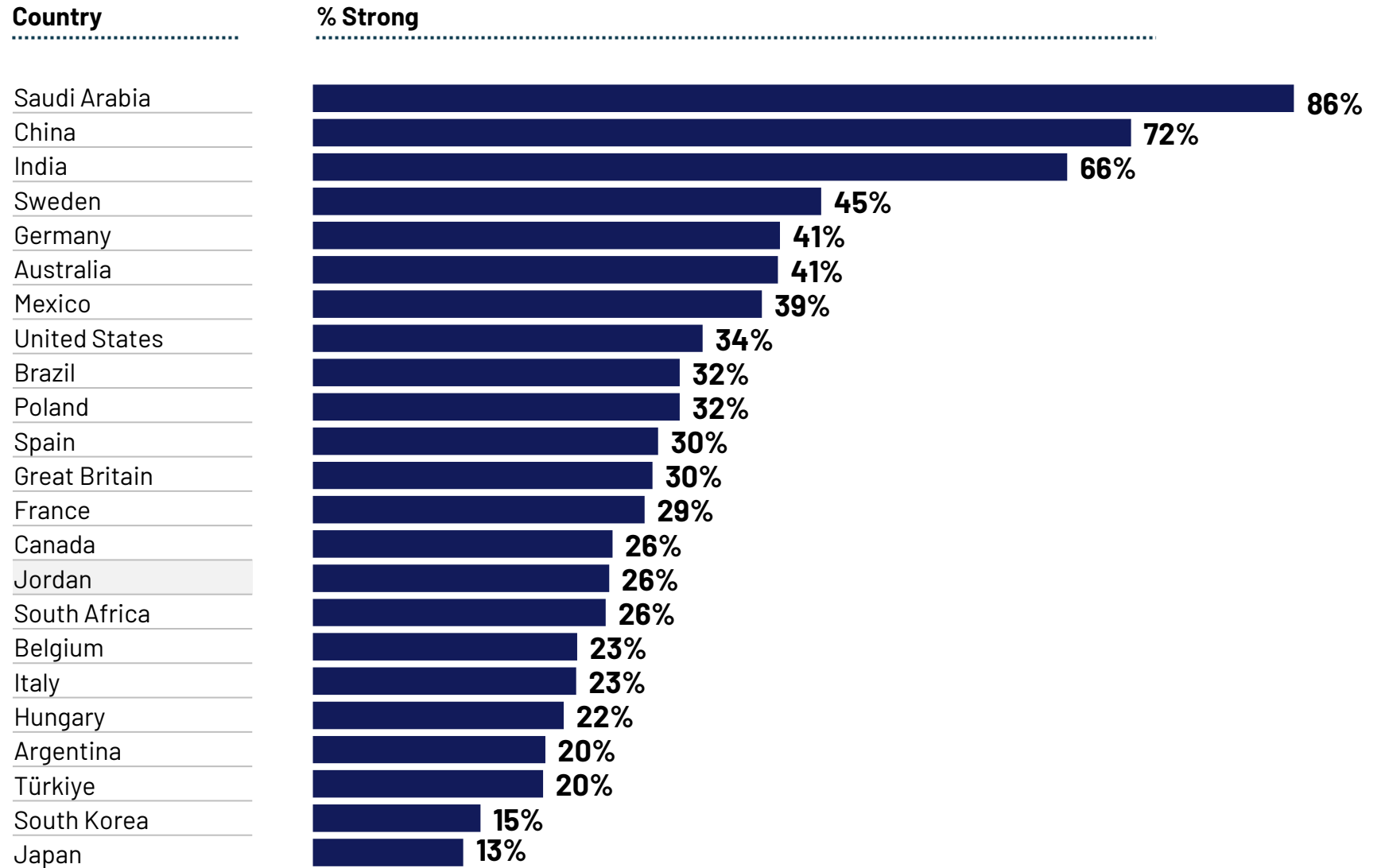
# Current state of the economy

Q: Rate the current state of the economy in your local area using a scale from 1 to 7, where 7 means a very strong economy today and 1 means a very weak economy.



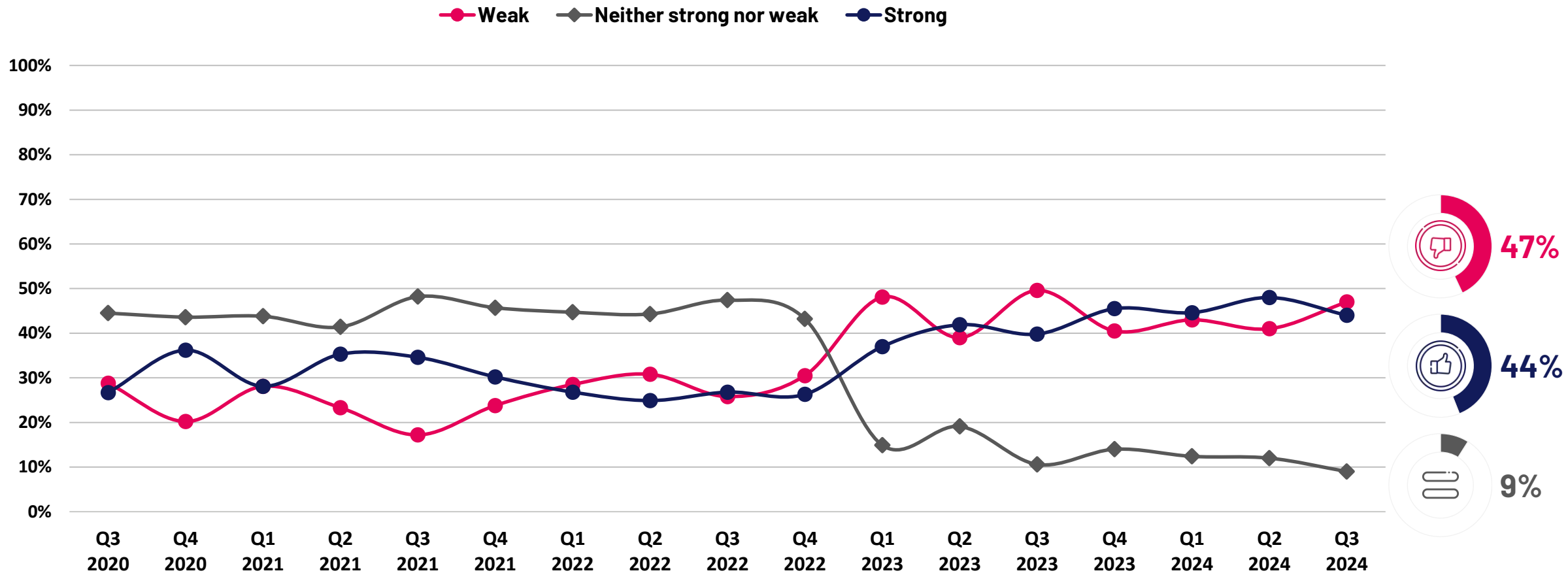
# Current state of the economy – global comparison

Q: Rate the current state of the economy in your local area using a scale from 1 to 7, where 7 means a very strong economy today and 1 means a very weak economy.



# Future state of the economy

Q. Looking ahead six months from now, do you expect the economy in your local area to be stronger, about the same or weaker than it is now?



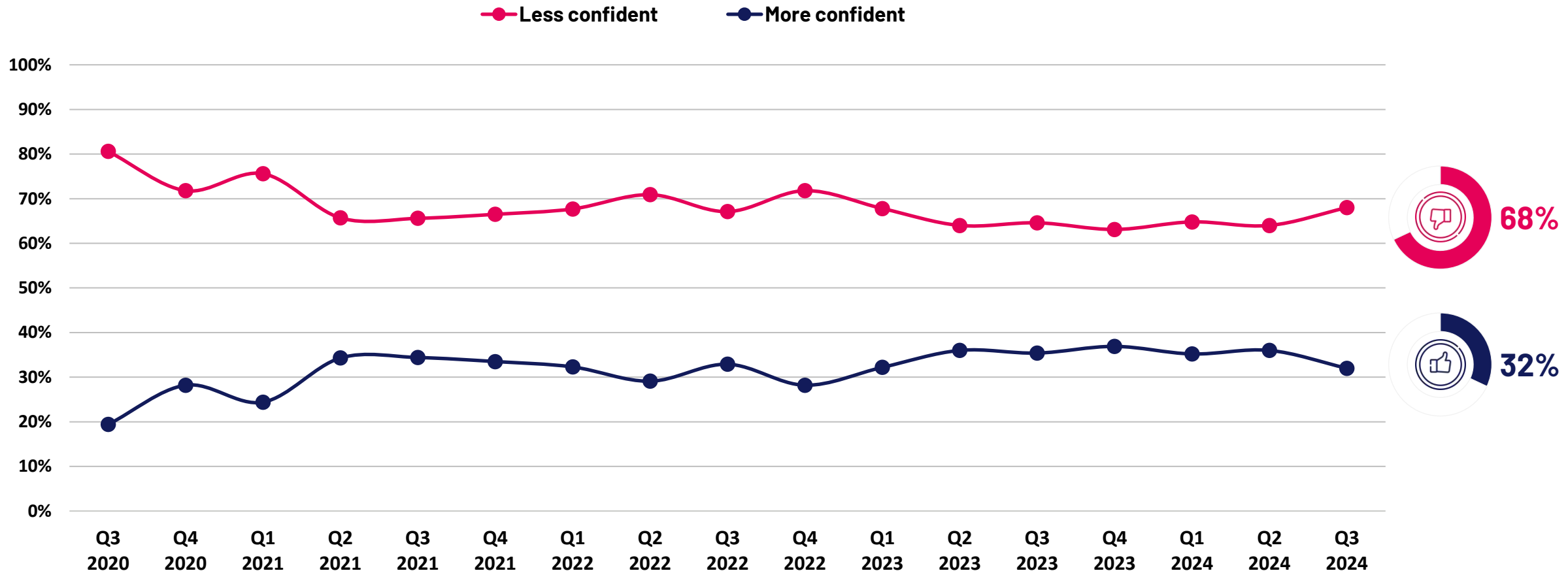
# EMPLOYMENT





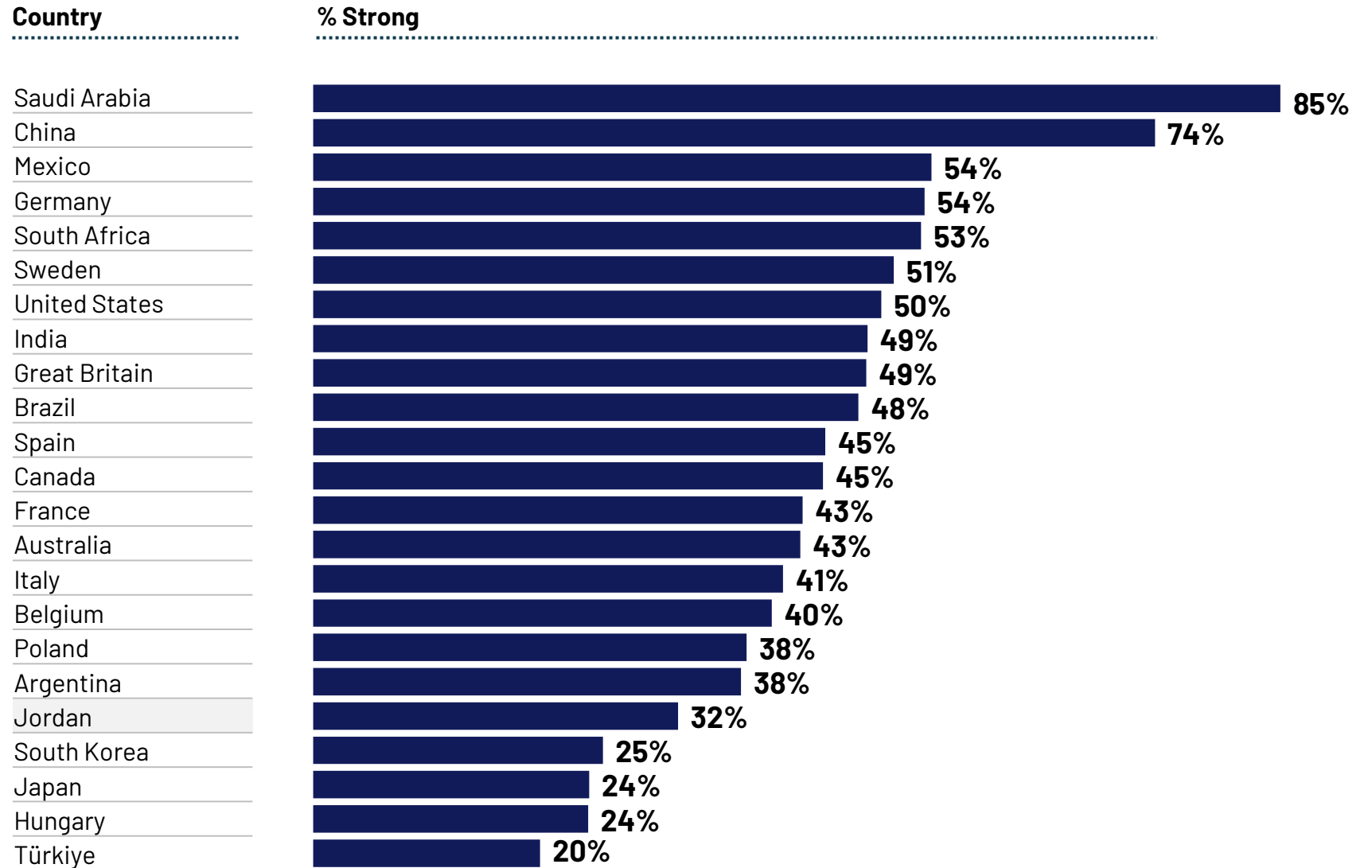
# Job security

Q. Compared to 6 months ago, are you now more or less confident about job security for yourself, your family and other people you know personally?



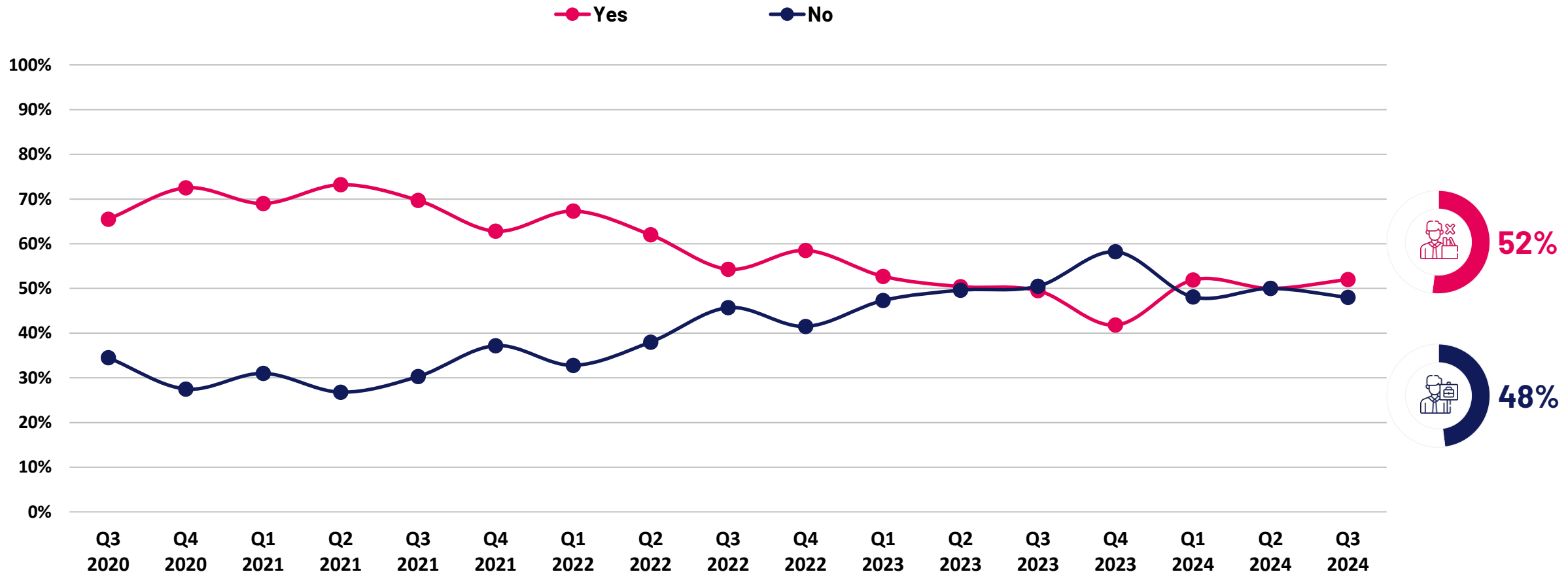
# Job security – global comparison

Q. Compared to 6 months ago, are you now more or less confident about job security for yourself, your family and other people you know personally?



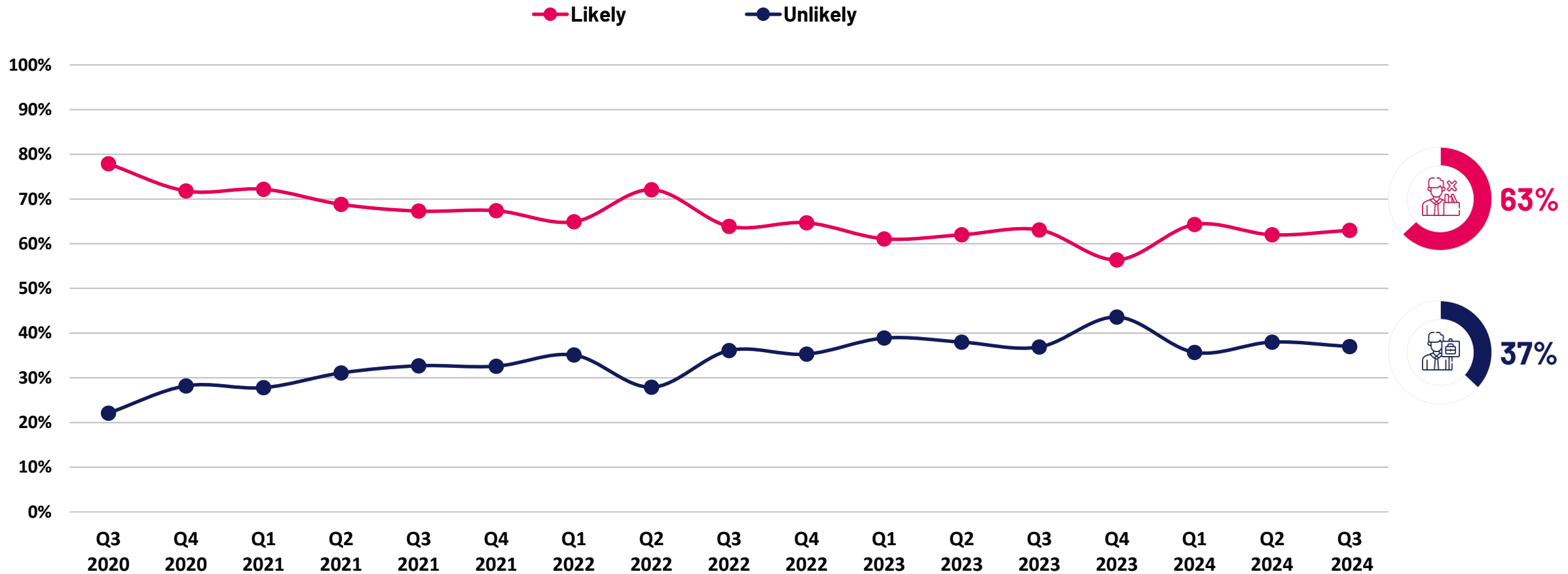
# Job losses in the past 6 months

Q. Thinking about the last 6 months, have you, someone in your family or someone else you know personally lost their job as a result of economic conditions?



# Job losses in the next 6 months

Q. Looking ahead at the next six months, how likely is it that you, someone in your family or someone else you know personally will lose their job in the next six months as a result of economic conditions?

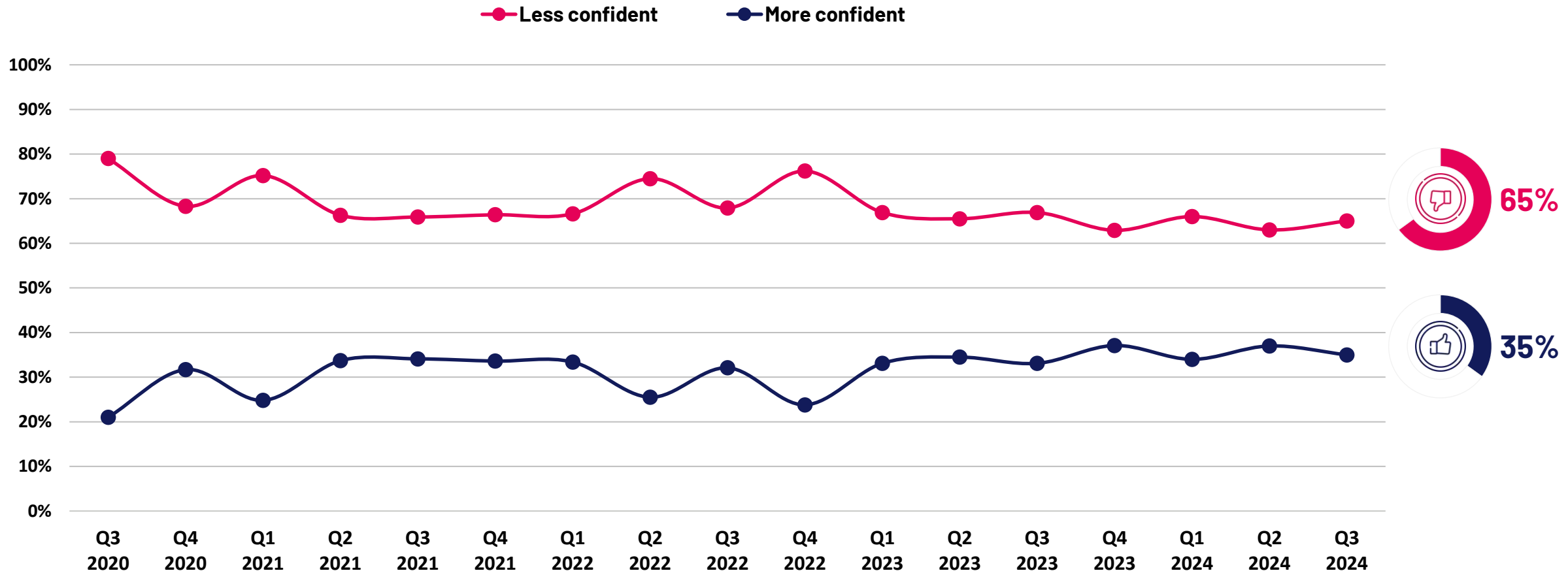


# INVESTMENT CLIMATE



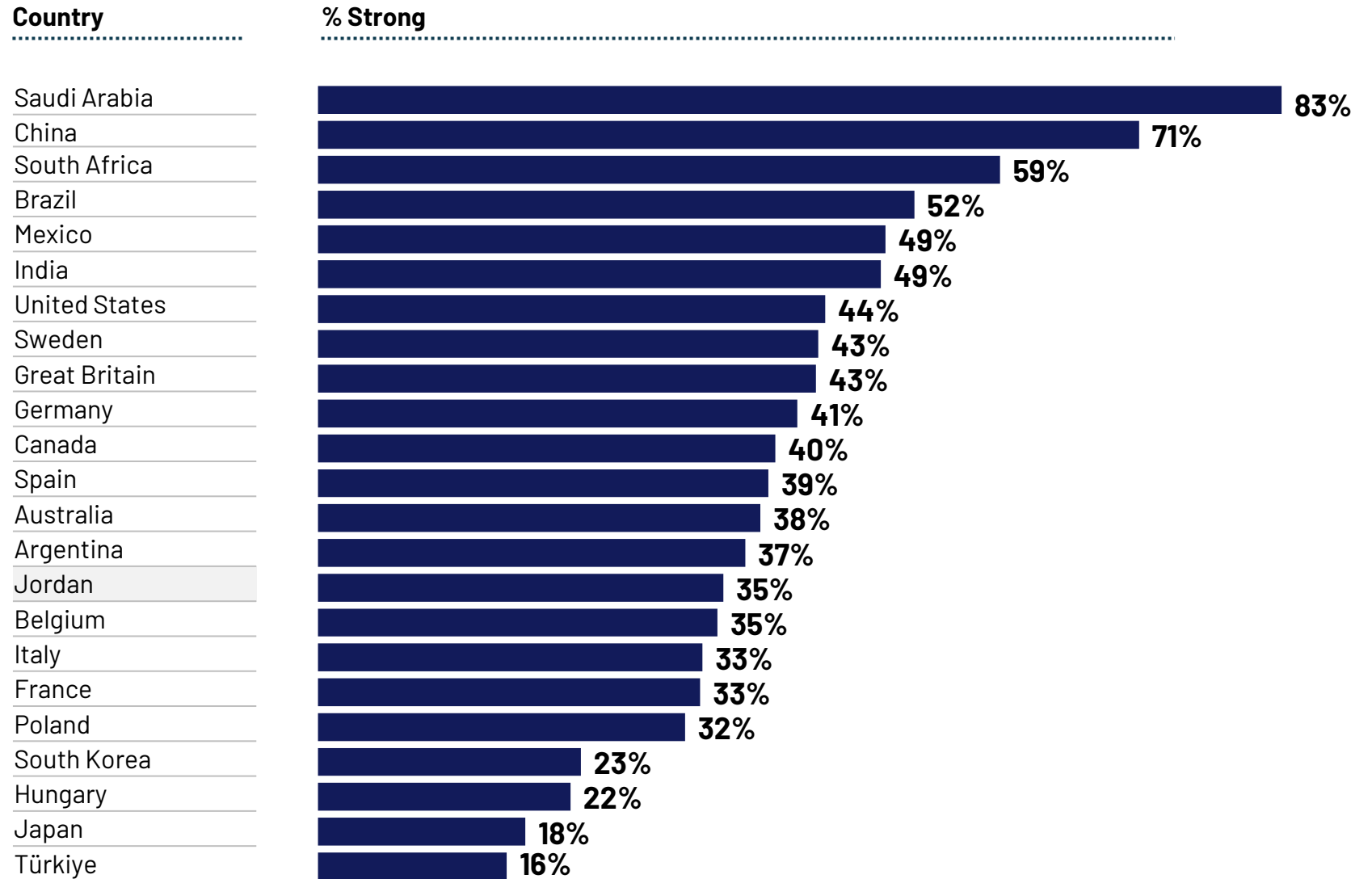
# Ability to invest in the future

Q. Compared to 6 months ago, are you now more or less confident about your ability to invest in the future, including your ability to save money for your retirement and your children's education?



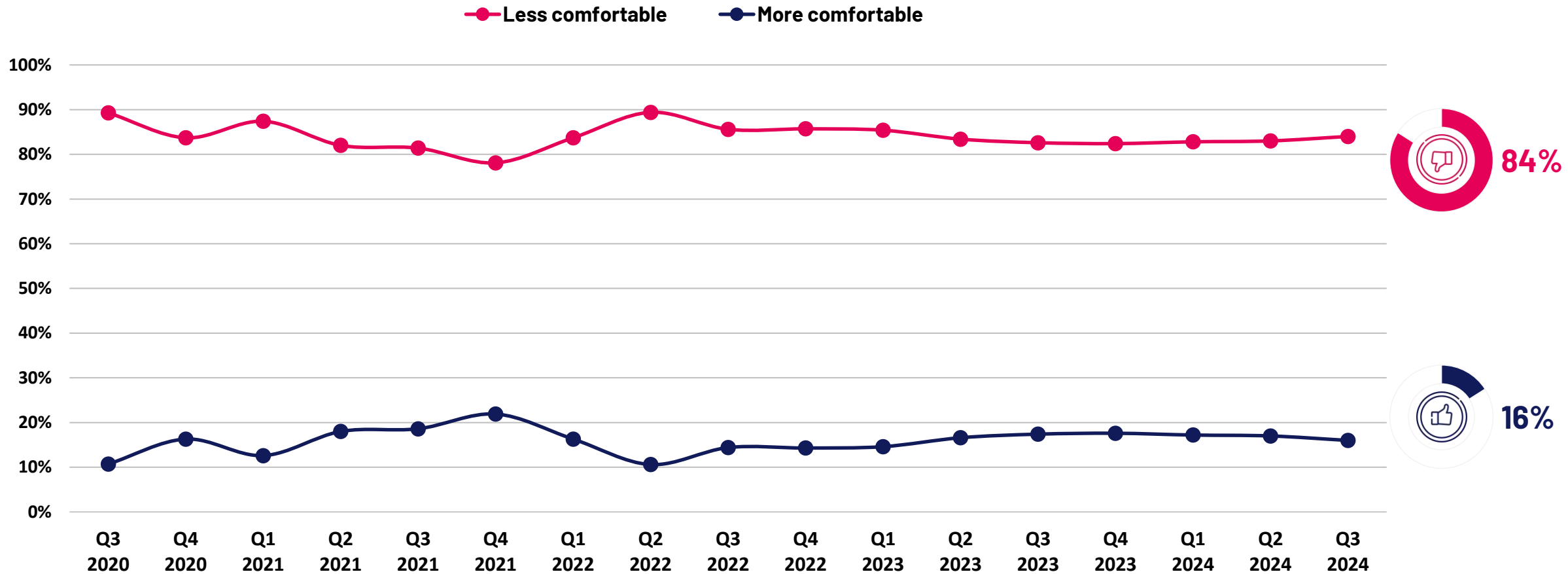
# Ability to invest in the future – global comparison

Q. Compared to 6 months ago, are you now more or less confident about your ability to invest in the future, including your ability to save money for your retirement and your children's education?



# Ability to make a major purchase

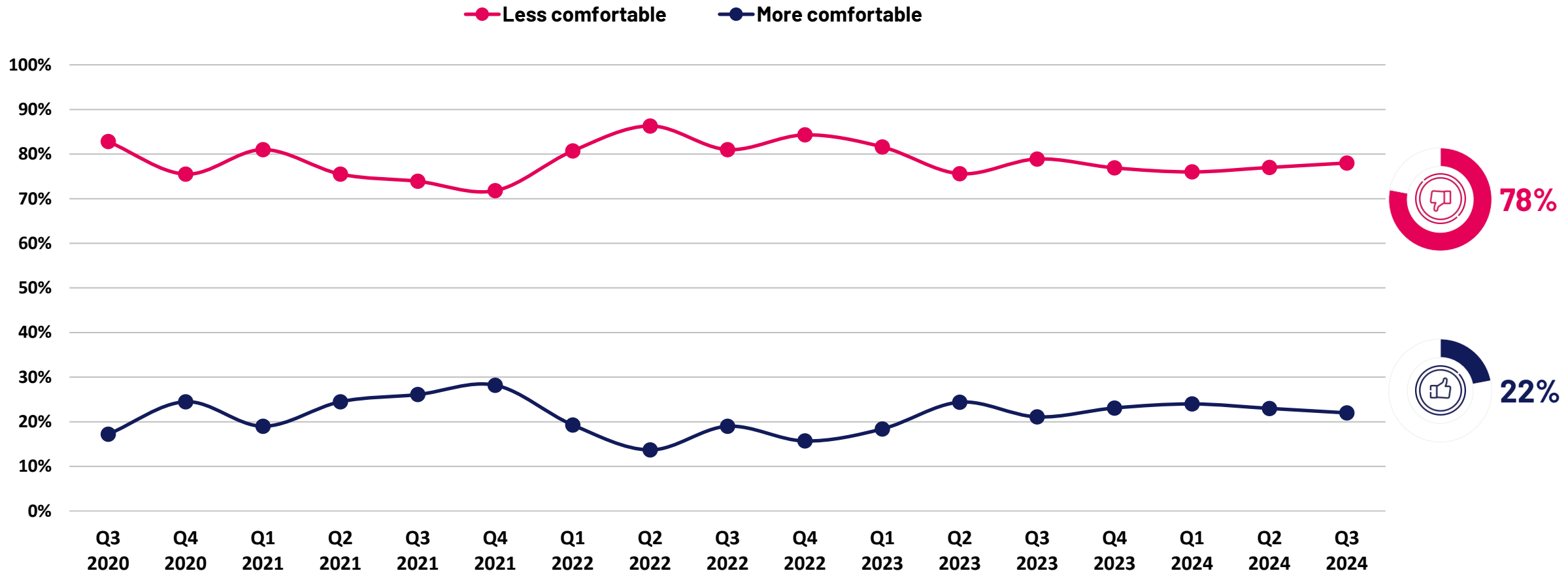
Q. Compared to 6 months ago, are you now more or less comfortable making a major purchase, like a home or car?





# Buying household durables

Q. Compared to 6 months ago, are you now more or less comfortable making other household purchases?

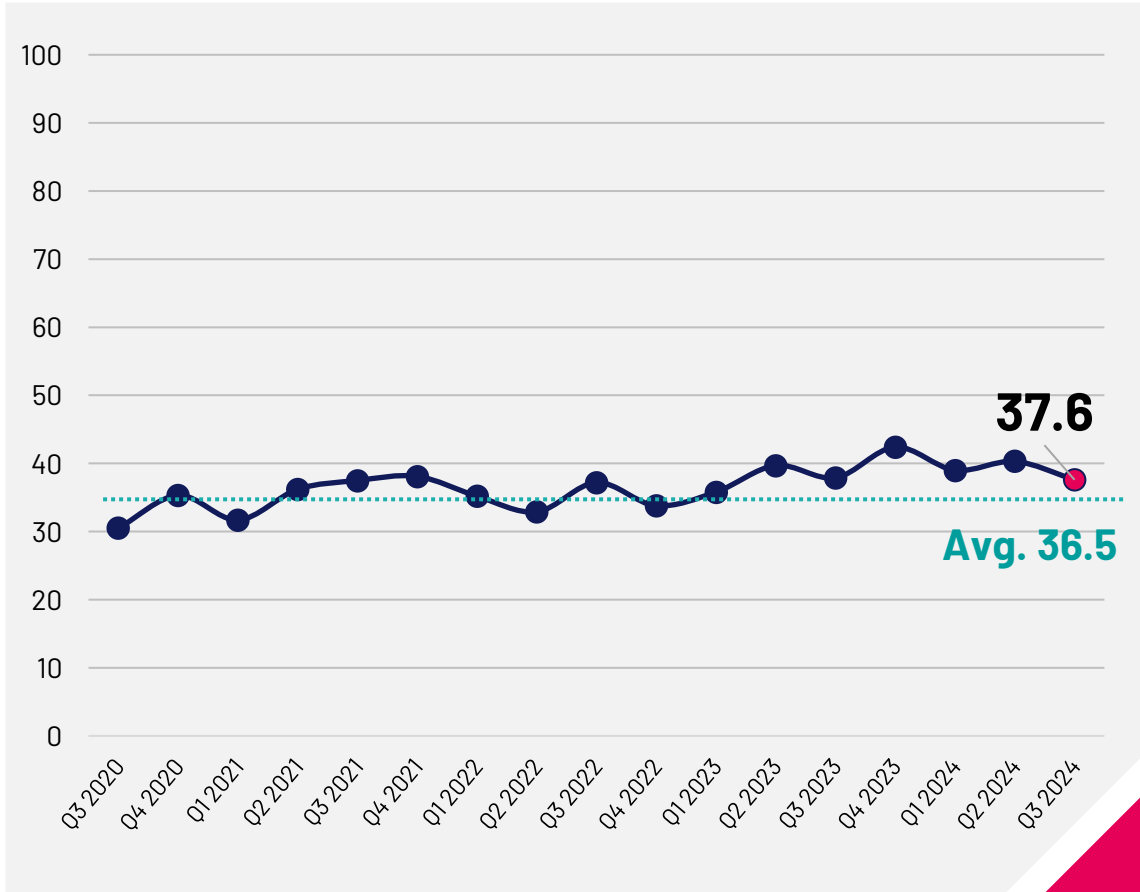


# JCSI DEEP DIVE

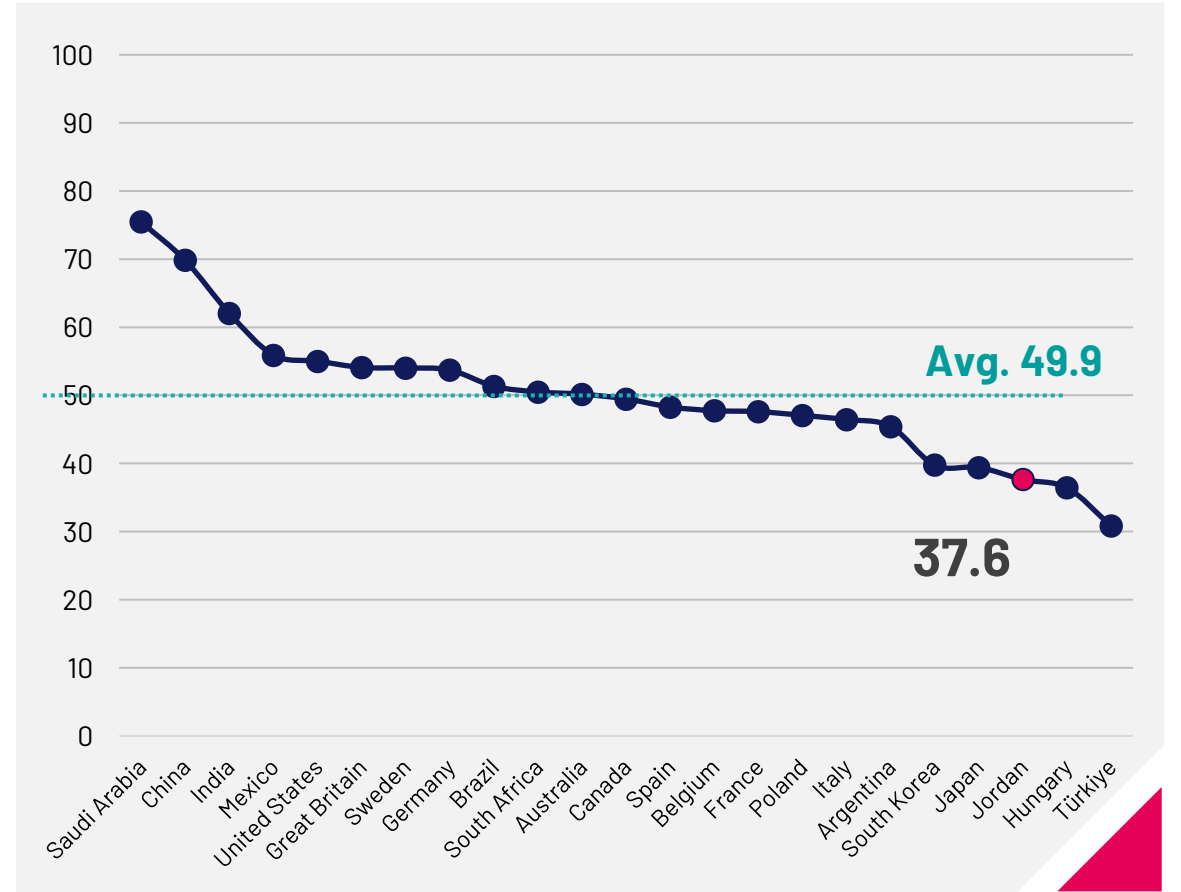


# Overall JCSI

## Jordan



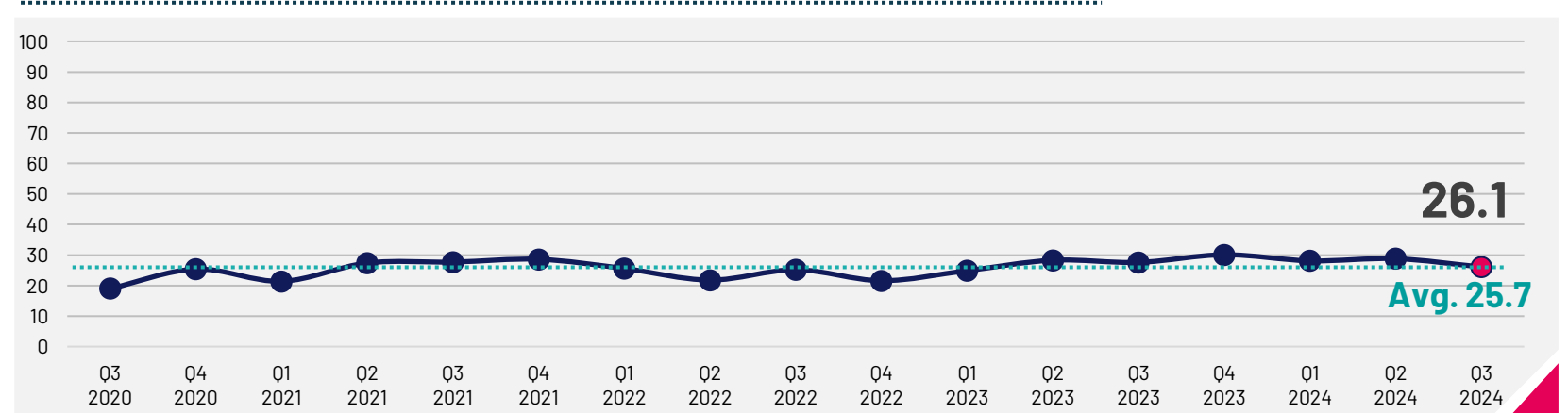
## Global comparison



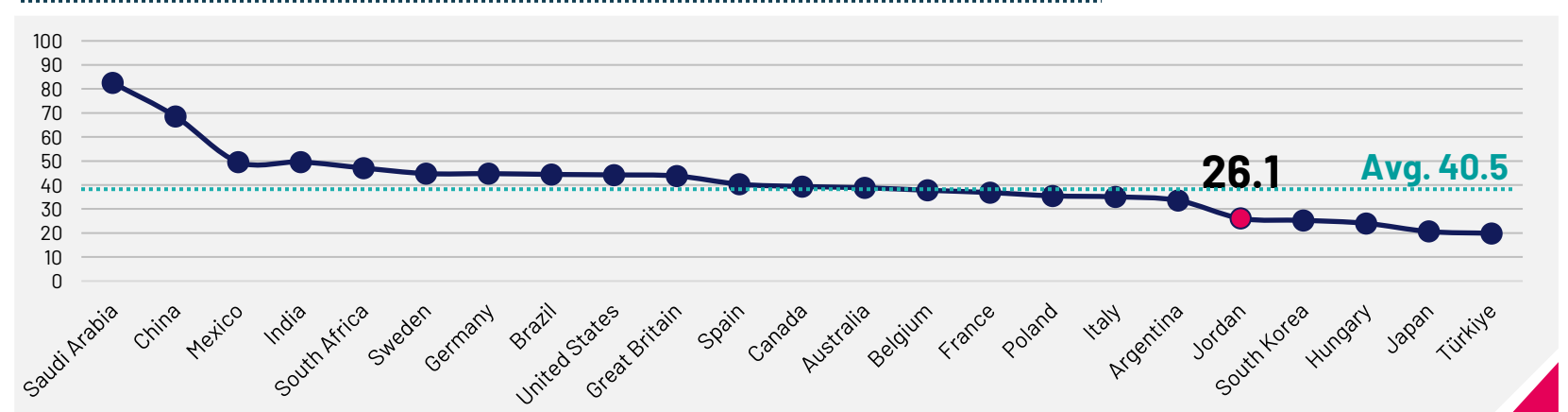
# JCSI personal financial conditions

- Compared to 6 months ago, are you now more or less comfortable making a major purchase, like a home or car?
- Compared to 6 months ago, are you now more or less comfortable making other household purchases?
- Compared to 6 months ago, are you now more or less confident about job security for yourself, your family and other people you know personally?
- Compared to 6 months ago, are you now more or less confident of your ability to invest in the future, including your ability to save money for your retirement or your children's education?
- Rate your current financial situation, using a scale from 1 to 7, where 7 means your personal financial situation is very strong today and 1 means it is very weak.
- Rate the current state of the economy in your local area using a scale from 1 to 7, where 7 means a very strong economy today and 1 means a very weak economy.

## Jordan



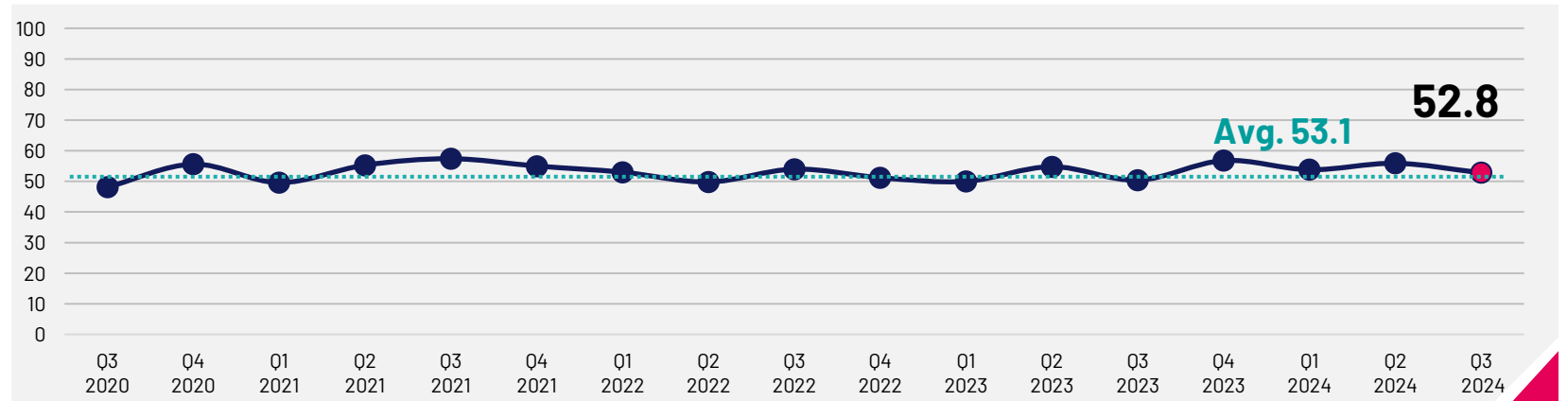
## Global comparison



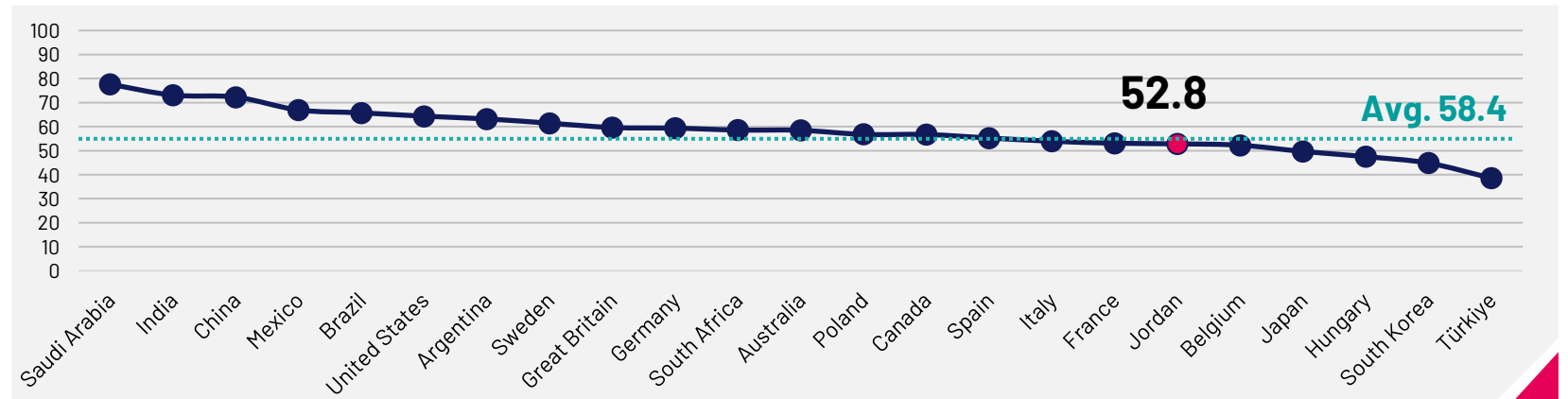
# JCSI economic expectations

- Now look ahead at the next six months. How likely is it that you, someone in your family or someone else you know personally will lose their job in the next six months as a result of economic conditions?
- Looking ahead six months from now, do you expect the economy in your local area to be much stronger, somewhat stronger, about the same, somewhat weaker, or much weaker than it is now?
- Looking ahead six months from now, do you expect your personal financial situation to be much stronger, somewhat stronger, about the same, somewhat weaker, or much weaker than it is now?

## Jordan



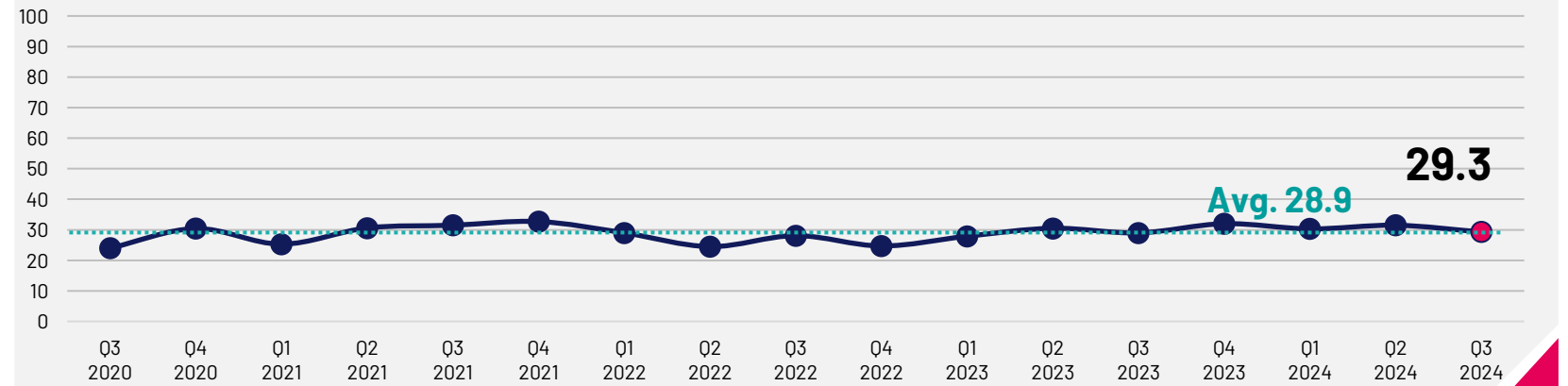
## Global comparison



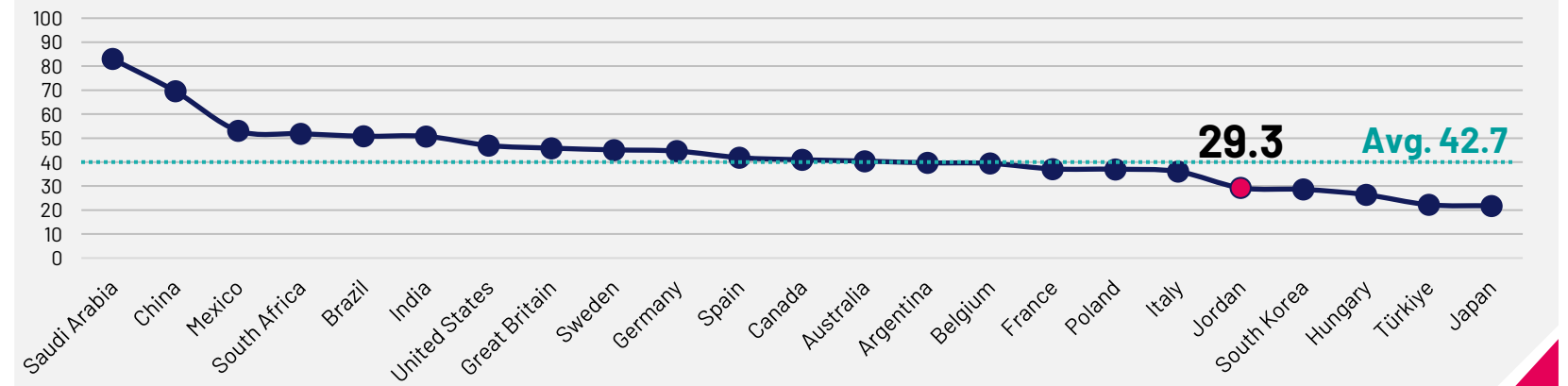
# JCSI investment climate

- Compared to 6 months ago, are you now more or less comfortable making a major purchase, like a home or car?
- Compared to 6 months ago, are you now more or less comfortable making other household purchases?
- Compared to 6 months ago, are you now more or less confident of your ability to invest in the future, including your ability to save money for your retirement or your children's education?
- Rate your current financial situation, using a scale from 1 to 7, where 7 means your personal financial situation is very strong today and 1 means it is very weak.
- Looking ahead six months from now, do you expect your personal financial situation to be much stronger, somewhat stronger, about the same, somewhat weaker, or much weaker than it is now?

## Jordan



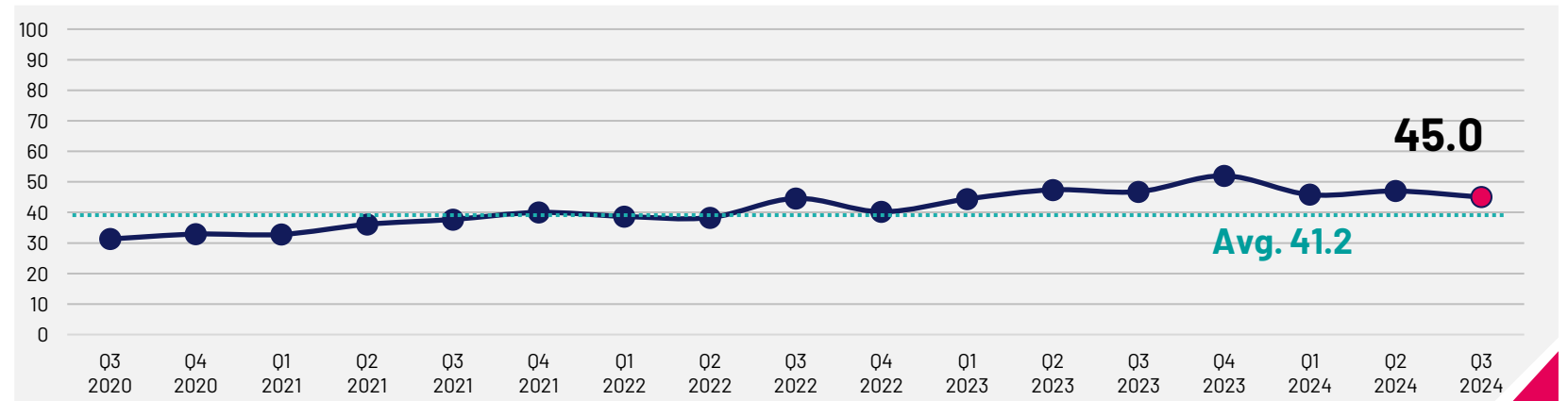
## Global comparison



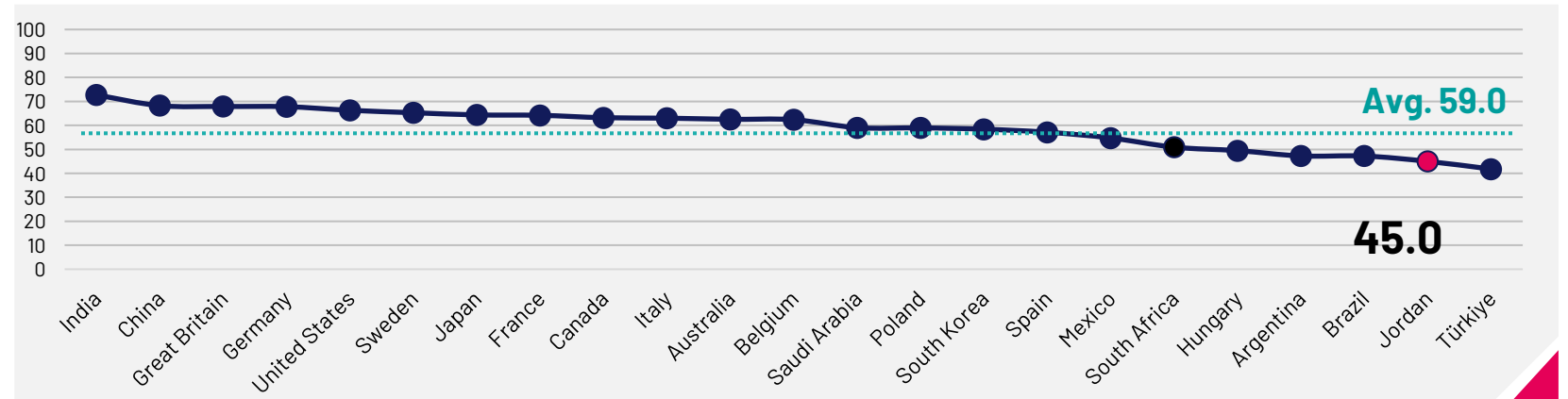
# JCSI employment confidence

- Compared to 6 months ago, are you now more or less confident about job security for yourself, your family and other people you know personally?
- Thinking about the last 6 months, have you, someone in your family or someone else you know personally lost their job as a result of economic conditions?
- Now look ahead at the next six months. How likely is it that you, someone in your family or someone else you know personally will lose their job in the next six months as a result of economic conditions?

## Jordan



## Global comparison



# Sample and methodology

- **Methodology – Computer Aided Telephone Interviews (CATI)**
- **Sample Size – 1000 Respondents**
- **Age – 18 years and above**
- **Sample Criteria – General Public**

The Jordan Consumer Sentiment Index is calculated by utilizing data from the survey results. Responses are divided into aggregated Top Box (Reward) numbers and Bottom Box (Penalty) numbers. Using Shapely Value Analysis, values were generated for the penalty and reward for each question. The magnitude of each question is the difference between the reward and penalty. An Importance factor, which the ultimate weight of the particular question in the index, is the magnitude of each question divided by the total magnitude of all questions. A Top

Box Weight for each question is calculated by dividing the Reward by the magnitude of each question. Similarly, the Bottom Weight for each question is calculated by dividing the Penalty for each question by magnitude of the same. The Index Value for each question is calculated by using the formula:  $\text{Importance} \times (\text{Top Box Wt} * \text{Top Box \%}) - (\text{Bottom Box Wt} * \text{Bottom box \%})$ .



# For More Information

## **Hala Elfar**

Managing Director  
Ipsos in Jordan and Iraq  
hala.elfar@ipsos.com

## **Seham Naser**

Account Manager – Head of MSU & BHT  
Ipsos in Jordan  
seham.naser@ipsos.com

## **Bader Al Afghani**

Research Analyst  
Ipsos in Jordan  
bader.afghani@ipsos.com